

**THURSDAY 26TH MARCH**

---

**BEECH CLASS**

# GOOD MORNING EVERYONE. TODAY'S SUBJECTS ARE AS FOLLOWS...

---

1. Maths
2. English
3. Comprehension
4. Spelling
5. PE
6. RE / PSHE

Remember to stick to a routine,  
as best you can. It makes the  
day run much smoother – for  
everyone.



# MATHS - YEAR 4

## LO: USE AND INTERPRET FREQUENCY TABLES

*Mental maths starter:*

*How quickly can you do this?*

*Can you do these questions mentally,  
with jottings or using a written  
method?*

*Answers on the next page...*

Share 9 marbles equally between 3 children. How many do they get each?

Share 12 marbles equally between 3 children. How many each do they get?



Share 15 marbles equally between 3 children. How many now?

# ANSWERS:

---

Share 9 marbles equally between 3 children. How many do they get each?

Share 12 marbles equally between 3 children. How many each do they get?



Share 15 marbles equally between 3 children. How many now?

- 1) 3 marbles
- 2) 4 marbles
- 3) 5 marbles



# Today's tasks...




- **Abacus 4.** (shape-crocodile book) Complete page 53
- **Evolve Text Book 1.** (Minty coloured books) Complete page 42

These links explain the key learning if you need more explanation

<https://www.youtube.com/watch?v=wuxhiqjgx5i>

<https://www.youtube.com/watch?v=6L2ch1esFGA>

<https://www.bbc.co.uk/bitesize/guides/zvybkqt/revision/2>

| Pet  | Favorite Pets |        |
|--|---------------|--------|
|  | Tally Marks   | Number |
|   |               | 10     |
|   |               | 4      |
|  |               | 6      |

**ANSWERS:** remember to do 3 questions, then check answers – wrong? Try to work out where you are making mistakes / look at guidance again or use a resource which could help, then do the next 3 Q's. Still wrong? Ask and adult.

## Evolve answers

### Page 42

#### Tally charts and frequency tables

1. Class pets

| Pets    | Frequency |
|---------|-----------|
| Cat     | 13        |
| Dog     | 16        |
| Rabbit  | 7         |
| Hamster | 9         |

2. Survey of favourite animals

| Animal     | Frequency |
|------------|-----------|
| Chimpanzee | 17        |
| Lion       | 12        |
| Giraffe    | 26        |
| Shark      | 21        |
| Horse      | 33        |

3. Dog
  4. Rabbit
  5. Horse
  6. Giraffe
  7. Lion
  8. 45
  9. 109
  10. Answers will vary.
  11. (a) There would be more or less animal votes depending on the size of the class.  
(b) There would be a different selection of animals depending on people's favourites.
- Owl** Answers will vary.

**ANSWERS:** remember to do 3 questions, then check answers – wrong? Try to work out where you are making mistakes / look at guidance again or use a resource which could help, then do the next 3 Q's. Still wrong? Ask and adult.

## Abacus 4 answers (shape book)

### page 53 Frequency tables

Frequency tables

D1

| vowel | total |
|-------|-------|
| a     | 12    |
| e     | 8     |
| i     | 7     |
| o     | 6     |
| u     | 1     |

1. i      2. o      3. a      4. u      5. a      6. e  
7. e, 1 more      8. e, 7 more      9. i, 1 more      10. o, 5 more  
11. a, 4 more      12. a, 11 more

### Explore

Answers will vary.



# ENGLISH


## LO: TO COLLECT TOGETHER IDEAS.

---

**Context / purpose:** Mrs Patchett would like you to write a page for our school prospectus, encouraging other children to come to Bournebrook.

**Task: Write a conclusion to your writing** – Make sure your viewpoint (Our school is a good one to come to) is clear, and you have summarised your key persuasive points in the last paragraph. It should be clear to the reader that they have come to the end of the article, without saying ‘that’s all / the end / I’ve finished’ etc.

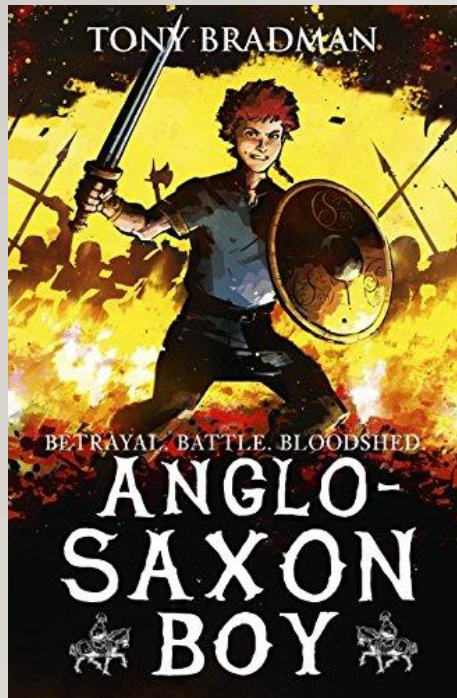
Once you have finished – Proof read and edit for all ‘non-negotiables’ and spellings – use your writing mats to help.





# READING COMPREHENSION

## LO: RETRIEVE ANSWERS FROM A TEXT

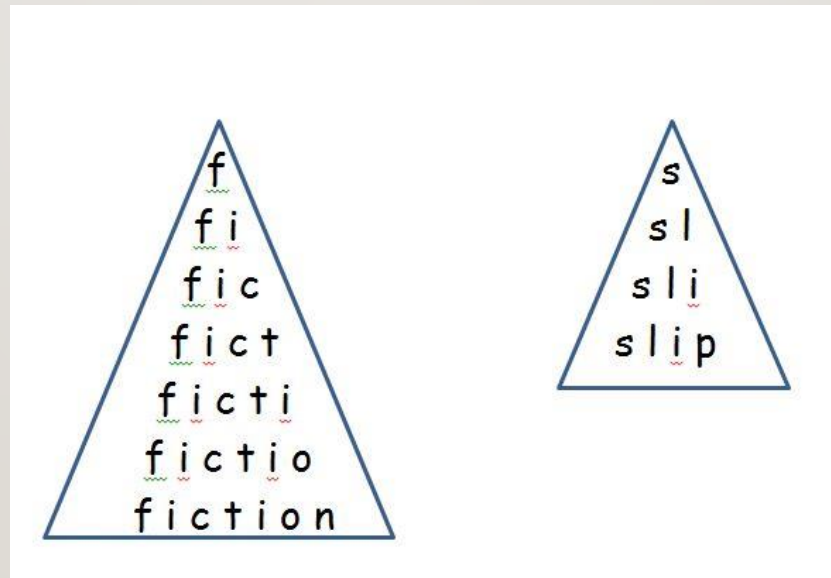


- Answer the following questions, as fully as you can:
  1. Pg 166 – describe the weather on the way to Norway.
  2. Pg 167 – where was Sweyn’s great hall?
  3. Pg 168 – describe Sweyn.
  4. Pgs 168-169 – draw and label Harald Hardrada.

# SPELLING

## LO: SPELLING PRACTISE

- Write out each spelling as a pyramid –  
You may use different colours if you wish.



# RE

LO: To evaluate art which expresses the idea of the Holy Trinity.

Look at these 6 images of stained glass windows that depict the Holy Trinity – the Father, the Son (Jesus Christ) and the Holy Spirit. Explain which you think expresses the idea of the Trinity best and give your reasons why. Can you design your own Holy Trinity stained glass window?

1







2



4



6



3



5



# PE WITH JOE

Click on the link below and choose today's date (or another if you prefer!)



<https://www.youtube.com/playlist?list=PLyCLOPd4VxBvQafyve889qVcPxYEjdSTI>