

THURSDAY 2ND APRIL

BEECH CLASS

GOOD MORNING EVERYONE. TODAY'S SUBJECTS ARE AS FOLLOWS...

1. Maths
2. English
3. Comprehension
4. Spelling
5. PE
6. RE / PSHE

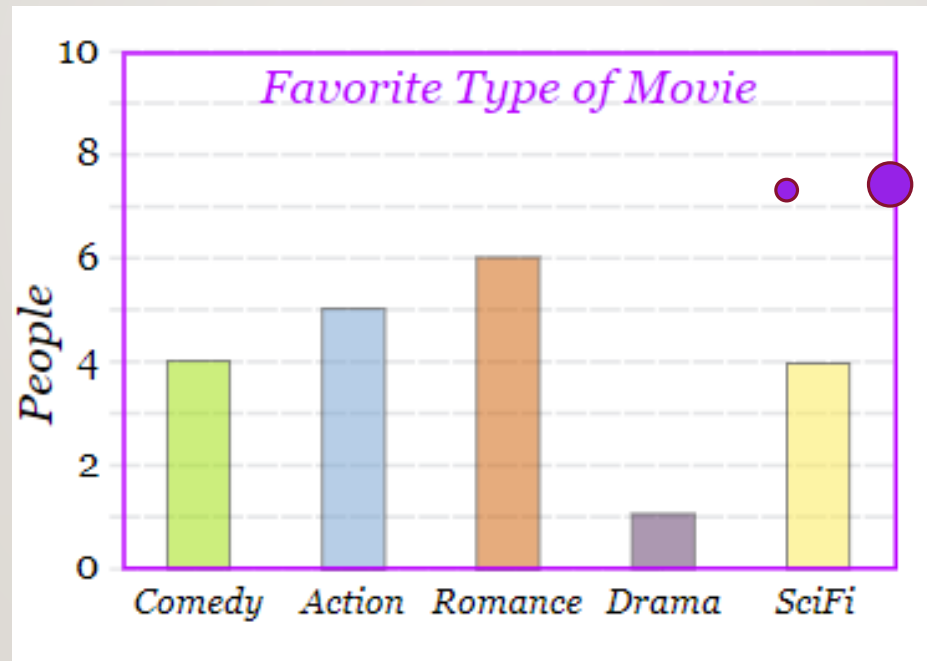
Remember to stick to a routine,
as best you can. It makes the
day run much smoother – for
everyone.



MATHS - YEAR 4

LO: USE AND INTERPRET BAR GRAPHS

Mental maths starter: on the following slide, with answers on the slide after that.



How can you tell this example is American?

Q1

Write the value of the digit 3 shown in the numbers below in the box next to each number.

40350303021

2 marks

Q2

$669 + 6 = ?$

$654 + 5 = ?$

$695 - 20 = ?$

$663 - 5 = ?$

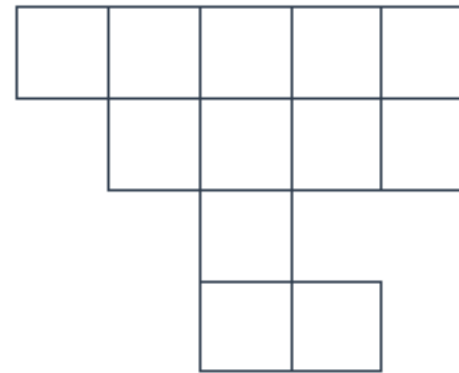
$654 - 5 = ?$

Circle the two number sentences above that have the same answer.

1 mark

Q3

Shade $\frac{1}{4}$ of this shape.



1 mark

Q1 Write the value of the digit 3 shown in the numbers below in the box next to each number.

403

3

5030

30

3021

3000

2 marks

Q2

$669 + 6 = ?$

$654 + 5 = ?$

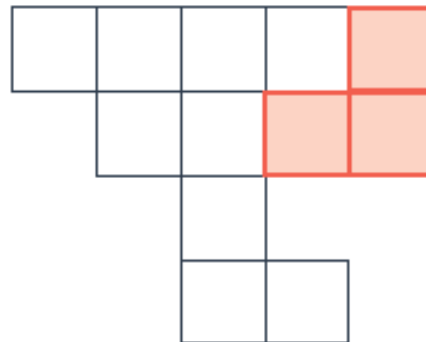
$695 - 20 = ?$

$663 - 5 = ?$

$654 - 5 = ?$

Circle the two number sentences above that have the same answer.

1 mark

Q3Shade $\frac{1}{4}$ of this shape.

1 mark

Today's tasks...

- **Abacus 4.** (crocodile book) Complete page 60
- **Evolve Text Book 2** Complete page 48

These links explain the key learning if you need more explanation

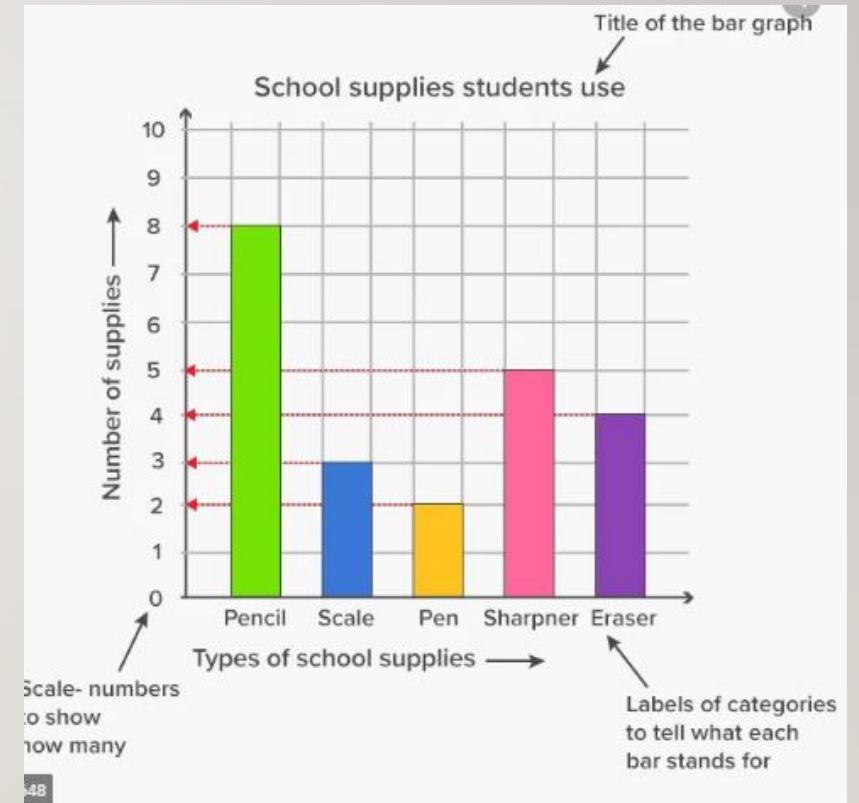
<https://www.bbc.co.uk/bitesize/topics/zf2f9j6/articles/z83wjxs>

(Gives general information about bar graphs)

<https://www.youtube.com/watch?v=7mKzTBYufaQ>

(shows how to draw graphs – useful for both books)

[You may also look back at yesterday's links.](#)



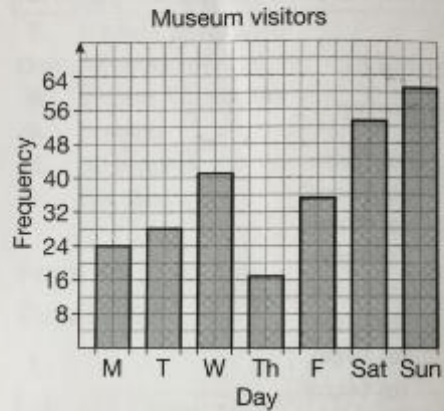
ANSWERS: remember to do 3 questions, then check answers – wrong? Try to work out where you are making mistakes / look at guidance again or use a resource which could help, then do the next 3 Q's. Still wrong? Ask and adult.

Evolve answers

Abacus 4 answers (shape book)

Page 48

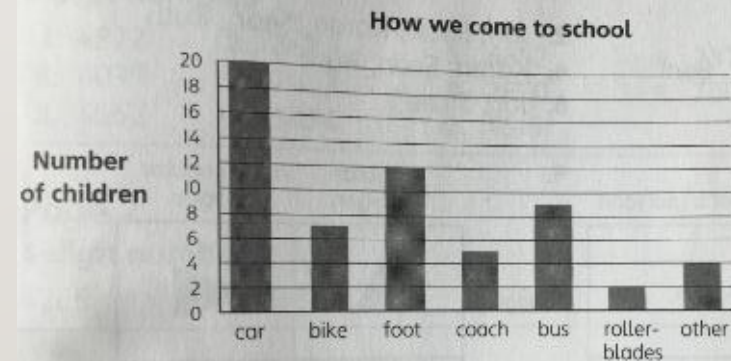
Bar graphs



1. Sunday
2. Thursday
3. 17
4. 12
5. 44
6. 7
7. 145
8. 114
9. Answers will vary. Possible reason: week days less busy because people are working or at school, etc.

page 60
Bar graphs

Bar graphs



Transport

- | | | | | |
|-------|-------|-------|-------|------|
| 1. 25 | 2. 16 | 3. 14 | 4. 14 | 5. 5 |
| 6. 15 | 7. 11 | 8. 4 | 9. 13 | |

ENGLISH

LO: WRITE PERSUASIVELY

Context / task: You are writing a page for a holiday brochure, with the sole purpose of ‘persuading’ your reader to choose that holiday destination.

Task: **Complete your writing**, if it is not finished, then **proof read and edit**. Look carefully at the success criteria (on the following page) and see if there are any opportunities to **up-grade your work**.

Then think about how you would want to **lay-out your page**. (If you have any holiday brochures at home, have a look at these or you could research examples on the internet.)

Copy out your persuasive writing and complete your page, with cohesive features suggested on the next page. →

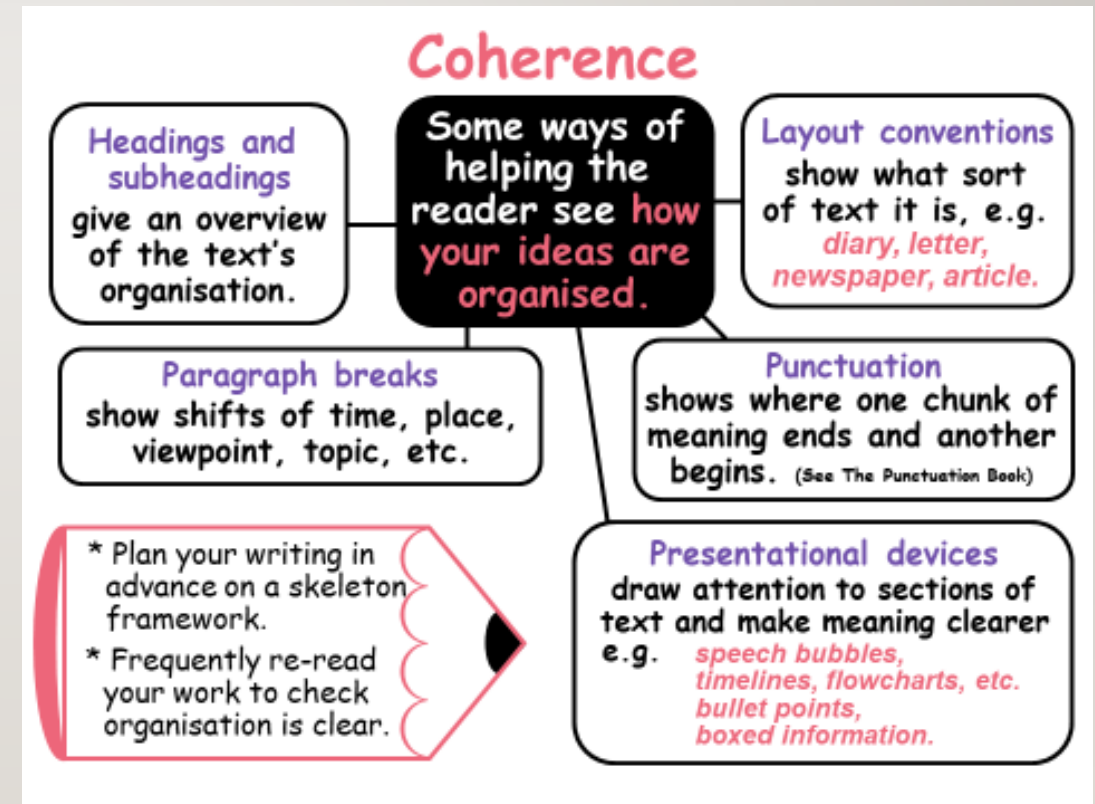


A GOOD EXAMPLE HAS...

(SUCCESS CRITERIA)

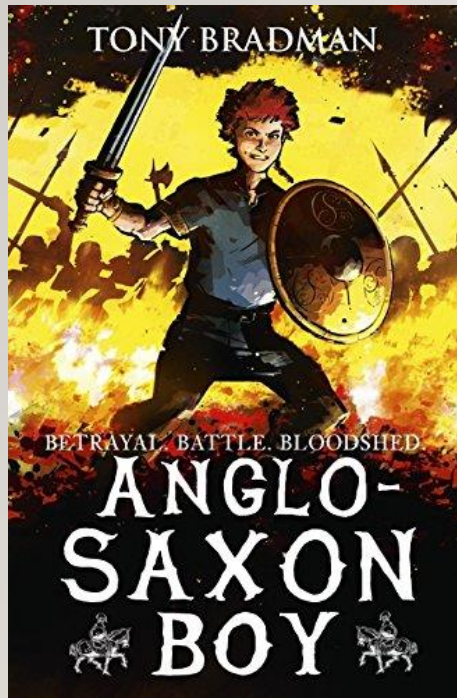
- Non-negotiables (CAPS / . / , / ! / / ?)
- Appealing adjectives in expanded noun phrases
- Paragraphing or other organisational features – (subheadings, bullet points, text boxes etc.) →
- Imperative verbs (enjoy... take... have...)
- Rhetorical questions
- Personal pronouns (you, we, our)

LAYOUT FEATURES YOU COULD USE...



READING COMPREHENSION

LO: SUMMARISE THE MAIN IDEAS OF A TEXT



- Read chapter 18.

In just 1 paragraph, describe the battle of Stamford Bridge (stick to the main points to give a sense of what happened – don't focus too much on the gory details). Remember your non-negotiables!

PE

GET UP AND GET MOVING WITH POPSUGAR FITNESS!

- <https://www.youtube.com/watch?v=5if4cjO5nxo>

Everyone can join in if they'd like – just make sure you have room. It may be worth watching 1st, before you start, then you'll know what to do.



PSHE

LO: UPDATE OUR NETWORK HAND

In the current home-learning situation we find ourselves in, we may need to adjust our normal network hand contacts – because some of the people we usually see regularly, may no longer be easily available.

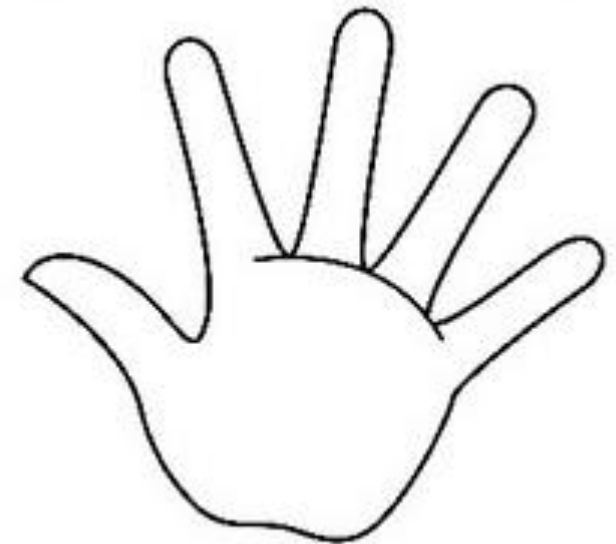
Think about who you'd normally have on your hand (we did this last term) and decide if any of these people or agencies might be difficult to turn to at the moment – these will need to be the ones to change.

I would also like you to add the following numbers to your hand, so if they are needed, you have them.



Finally: decorate and colour your network hand to really make it stand out in your book – or – do it on paper and display it in your work-space. You could photograph it and show us on facebook 😊

5 fingers of safety



I can use my fingers to name
5 people I feel safe with.
These are the people I can turn to for help,
no matter how big or small
my problem maybe.
They will always be there to help keep me safe.

- Remember to talk to someone on your Network Hand if you are worried about something
- If nobody is listening to your worries or there is nobody to talk to, you can call **Childline** on **08001111** - adults at Childline are used to talking to children with worries and can help you.

Wishing all in your family a safe and 'Happy Easter.'
Enjoy a good rest and have fun with your families.

