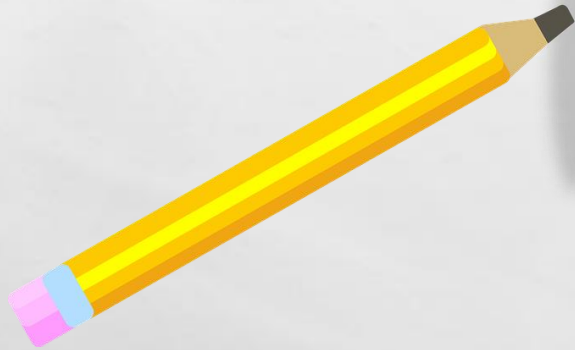


**DR BAKER'S YEAR 3 MATHS**  
**THURSDAY 30<sup>TH</sup> APRIL**



# WELCOME

Good Morning. Time for Thursday Times Tables! See if you can do them more quickly today.



$3 \times 2 = \underline{\quad}$

$3 \times 11 = \underline{\quad}$

$4 \times 1 = \underline{\quad}$

$2 \times 1 = \underline{\quad}$

$5 \times 4 = \underline{\quad}$

$8 \times 5 = \underline{\quad}$

$2 \times 11 = \underline{\quad}$

$5 \times 8 = \underline{\quad}$

$1 \times 5 = \underline{\quad}$

$12 \times 3 = \underline{\quad}$

$2 \times 12 = \underline{\quad}$

$5 \times 7 = \underline{\quad}$

$5 \times 10 = \underline{\quad}$

$5 \times 1 = \underline{\quad}$

$2 \times 8 = \underline{\quad}$

$10 \times 5 = \underline{\quad}$

$8 \times 10 = \underline{\quad}$

$10 \times 6 = \underline{\quad}$

$10 \times 12 = \underline{\quad}$

$9 \times 4 = \underline{\quad}$

# TASKS FOR TODAY

L.O. To solve problems with length.

For these problems we need to remember what we have already done this week. If you struggled with any of it have a look back at those lessons. Do you remember the two facts I said we needed to know? They were

There are 10 millimetres in a centimetre.

There are 100 centimetres in a metre.

Use these facts to answer the questions.



# SET A



Find the missing numbers:

- 5  $2 \text{ m} = \square \text{ cm}$
- 6  $8 \text{ cm} = \square \text{ mm}$
- 7  $26 \text{ cm} = \square \text{ mm}$
- 8  $90 \text{ mm} = \square \text{ cm}$
- 9  $170 \text{ mm} = \square \text{ cm}$
- 10  $5 \text{ m } 20 \text{ cm} = \square \text{ cm}$

Which symbol ( $<$  or  $>$ ) should go in each box?

- 11  $200 \text{ cm} \square 3 \text{ m}$
- 12  $640 \text{ mm} \square 60 \text{ cm}$
- 13  $8 \text{ m } 54 \text{ cm} \square 6 \text{ m } 90 \text{ cm}$
- 14 Put these lengths in order, starting with the smallest:

$8 \text{ m}, 850 \text{ cm}, 8 \text{ m } 30 \text{ cm}$

# SET B



Write these lengths in cm:

- 5 190 mm
- 6 15 m
- 7  $\frac{1}{2}$  m
- 8 9 m 84 cm
- 9 8 m 9 cm
- 10 10 m 60 cm

Which length is the longest:

- 11 200 cm or 20 m?
- 12 590 cm or 5 m 9 cm?
- 13 450 mm or 40 cm 6 mm?
- 14 A toy van is 9 cm long, a toy car is 85 mm long and a toy tractor is 8 cm 7 mm long. Put the toys in order of size, starting with the shortest.

# SET C



Find the missing numbers:

- 4  $3 \text{ m} = \square \text{ cm}$       7  $50 \text{ mm} = \square \text{ cm}$   
5  $7 \text{ cm} = \square \text{ mm}$       8  $200 \text{ cm} = \square \text{ m}$   
6  $15 \text{ cm} = \square \text{ mm}$       9  $140 \text{ mm} = \square \text{ cm}$

Put these lengths in order, starting with the shortest:

- 10  $48 \text{ m}, \quad 48 \text{ cm}, \quad 5 \text{ m}$   
11  $6 \text{ m}, \quad 550 \text{ cm}, \quad 5 \text{ m } 8 \text{ cm}$   
12  $63 \text{ mm}, \quad 6 \text{ cm } 8 \text{ mm}, \quad 7 \text{ cm}, \quad 69 \text{ mm}$

Work out:

- 13  $43 \text{ cm} + 56 \text{ cm}$       16  $400 \text{ m} - 60 \text{ m}$   
14  $250 \text{ m} - 40 \text{ m}$       17  $3 \text{ m } 62 \text{ cm} + 28 \text{ cm}$   
15  $164 \text{ m} + 500 \text{ m}$       18  $5 \text{ cm } 6 \text{ mm} - 7 \text{ mm}$

Harry did the long jump at sports day. His first jump was 2 m and his second jump was 3 m 40 cm.

- 19 What was the difference between his two jumps?  
20 What was the total distance of his two jumps?

# ANSWERS

## Set A

5. 200cm
6. 80mm
7. 260mm
8. 9cm
9. 17cm
10. 520cm
11. <
12. >
13. <
14. 8m, 8m 30cm, 850cm

## Set B

5. 19cm
6. 1500cm
7. 50cm
8. 9cm
9. 17cm
10. 1060cm
11. 20m
12. 590cm
13. 450mm
14. Car, Tractor, Van



# ANSWERS

Set C

4. 300cm

5. 70mm

6. 150mm

7. 5cm

8. 2m

9. 14cm

10. 48cm, 5m, 48m

11. 5m 8cm, 550cm, 6m.

12. 63mm, 6cm 8mm, 69mm, 7cm

13. 99cm

14. 210m

15. 664m

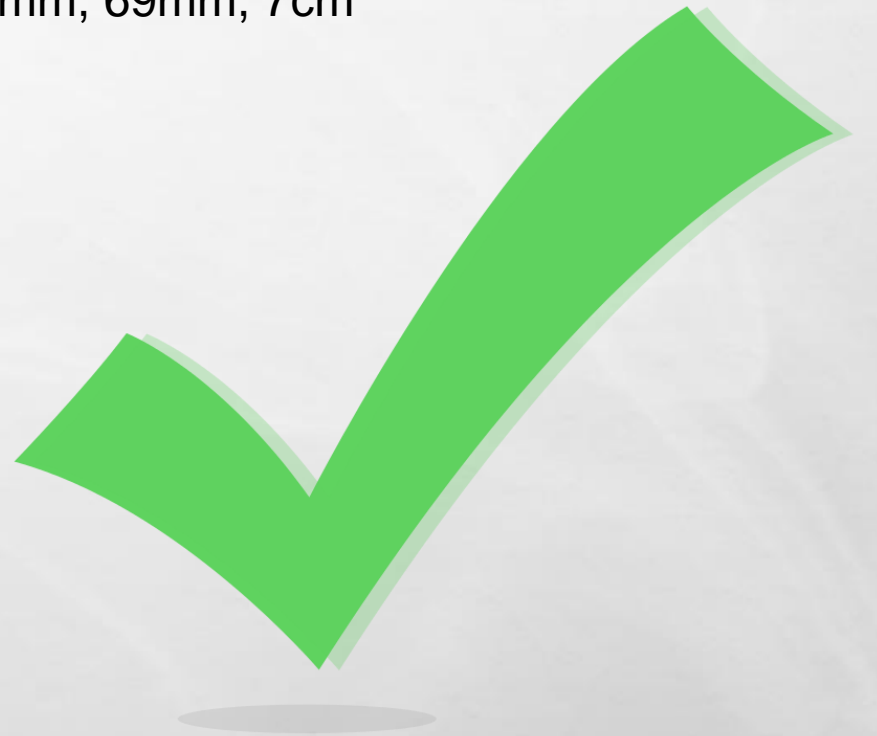
16. 340m

17. 3m 90cm

18. 4cm 9mm

19. 1m 40cm

20. 5m 40cm





# REMEMBER:

- **Talk to someone on your network hand if you are worried about something.**
- **If nobody is listening to your worries or there is nobody to talk to, you can google Childline or call them on 08001111. Adults at Childline are used to talking to children with worries and can help you.**
- **If you feel unsafe at home or are worried that a friend is not safe, call Mrs Patchett on 07787261064.**